

# CURVA DE FLANGE MÓVEL A 22° 30' 10.1002

## DOUBLE MOVABLE FLANGED 22° 30' BEND

PN 10 / 16 / 25

Flange	DIN EN 1092-2
--------	---------------

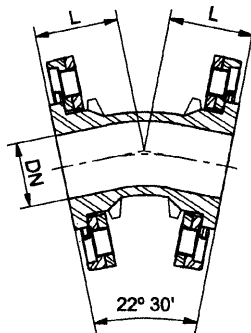
A partir de DN 700 inclusive as curvas são de flange fixa.

From DN 700 inclusively the bends are with fixed flanges.

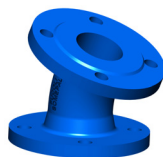
componente	material	component	material	norma	standard
corpo e flanges	ferro fundido dúctil (EN-GJS-500)	body and flanges	ductile iron (EN-GJS-500)	DIN EN 1563	
revestimento anticorrosivo interior e exterior	tinta epóxica potável RESICOAT 9000 R4 BLUE aplicada electrostaticamente com espessura $\geq 250 \mu\text{m}$	coating inside and outside	epoxy paint potable RESICOAT 9000 R4 BLUE applied electrostatically with thickness $\geq 250 \mu\text{m}$	DIN 30677	

**Sob Consulta:**  
Outros diâmetros.

**On request:**  
Other diameters.



DN	Código - Code			L	Peso - Weight (Kg)		
	PN 10	PN 16	PN 25		PN 10	PN 16	PN 25
40	10002010	10002010	10002012	65	4.0	4.0	4.0
50	10002020	10002020	10002022	65	5.3	5.3	5.3
60	10002030	10002030	10002032	65	5.9	5.9	5.9
65	10002040	10002040	10002042	65	6.5	6.5	6.5
80	10002050	10002050	10002052	65	7.2	7.2	7.2
100	10002060	10002060	10002062	68	9.0	9.0	9.8
125	10002070	10002070	10002072	75	11.9	11.9	12.7
150	10002080	10002080	10002082	80	14.3	14.3	15.1
200	10002090	10002090	10002092	87	19.4	19.4	20.8
250	10002100	10002101	10002102	110	31.7	31.7	34.3
300	10002110	10002111	10002115	123	44.7	44.7	49.1
350	10002112	10002113	10002117	140	58.0	60.8	72.0
400	10002120	10002121	10002125	150	73.2	79.0	90.2
450	10002130	10002131	10002435	170	90.0	99.0	110.0
500	10002150	10002151	10002152	180	110.0	127.4	140.0
600	10002180	10002181	10002182	205	154.0	174.0	188.0
700	10118150	10118152	10118154	245	-	-	-
800	10118160	10118162	10118164	275	322.0	362.0	-
900	10118170	10118172	10118174	300	-	-	-
1000	10118180	10118182	10118184	327	-	-	-



### Homologações - Homologation

<b>Revestimento</b> - Coating
- INETI (Portugal)
- KIWA (Holanda - Netherlands)
- WRAS (Reino Unido - United Kingdom)
- CARSO (França - France)
- HYGIENE Institut Ruhrgebiets (Alemanha - Germany)

Sendo um dos principais objectivos da nossa empresa o desenvolvimento e aperfeiçoamento dos nossos produtos, reservamo-nos no direito de fornecer quaisquer outros que possam diferir ligeiramente dos descritos e ilustrados nesta publicação.

Being one of our aims a constant development of our products, the characteristics of described material may be altered without prior warning.

